

FITNESS

PRODUCT PRICING SHEET 2024



FITKIT PRO



KIT INCLUDES:

- 1 Flat Resistance Band
- 2 Fit2Go Waist Pack
- 3 Tubing with Handles
- 4 Door Anchor
- 5 Starter Exercise Cards
- 6 Safety Light
- 7 Packaging
 - (a) Semi hard zippered case (or)
 - (b) Canvas Zippered Bag

Welcome Guide with Access to Online Resource Hub.

	25	250	500	1000	1000+	(4E)
Case(#FKPC01)	\$33	\$32.50	\$32	\$31.50	contact us	
Bag(#FKPB01)	\$30	\$29.50	\$29	\$28.50	contact us	
Imprint Logo	+\$3	+\$3	+\$3	+\$2	contact us	

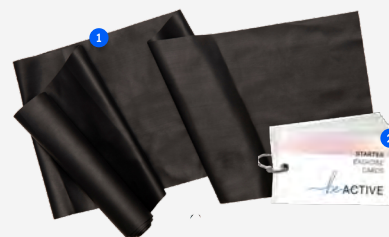
KIT INCLUDES:

- 1 Flat Resistance Band
- 2 Starter Exercise Cards
- 3 Packaging
 - (a) Semi hard zippered case (or)
 - (b) Canvas Zippered Bag

Welcome Guide with Access to Online Resource Hub.

	25	250	500	1000	1000+	(4E)
Case (#FKMC01)	\$21	\$20.50	\$20	\$19.50	contact us	
Bag (#FKMB01)	\$18	\$17.50	\$17	\$16.50	contact us	
Add Your Logo	+\$3	+\$3	+\$3	+\$3	contact us	

FITKIT MINI



FITKIT LITE



KIT INCLUDES:

- 1 Flat Resistance Band
- 2 Starter Exercise Cards
- 3 Organza Drawstring Bag

Available Colours



Welcome Guide with Access to Online Resource Hub.



ITEM #FKLO1	25	250	500	1000	1000+	(4E)
Blank (No Branding)	\$14.50	\$14	\$13.50	\$13	<i>contact us</i>	
Logo'd Hangtag	+\$1	+\$1	+\$1	+\$1	<i>contact us</i>	

GOLFWELL KIT

KIT INCLUDES:

- 1 Tubing with Handles
- 2 Cards with golf specific exercises, tips and more
- 3 Insect Repellent Wipes (2)
- 4 Sunscreen Pen (.34 oz, 30 SPF)
- 5 Packaging
 - a Semi hard zippered case (or)
 - b Canvas Zippered Bag



Welcome Guide with Access to Online Resource Hub.



	25	250	500	1000	1000+	(4E)
Case (#GWKC01)	\$29	\$28.50	\$28	\$27.50	<i>contact us</i>	
Bag (#GWKB01)	\$26	\$25.50	\$25	\$24.50	<i>contact us</i>	
Add Your Logo	+\$3	+\$3	+\$3	+\$3	<i>contact us</i>	

FIT2GO KIT



The FIT2GO KIT is perfect for getting your move on and carrying everything you need with you. Included is the expandable, bounce free Fit2Go waist pack to hold a phone (all iPhone and Android sizes), keys and ID.

ADDITIONAL FEATURES:

- 1 Bounce Free
- 2 Fits all size phones
- 3 Reflective strip zipper
- 4 Earphone cord hole
- 5 Expands to fit waists up to 48"



Welcome Guide with Access to Online Resource Hub.

	25	250	500	1000	1000+	(4E)
Blank	\$16	\$15.50	\$15	\$14.50	<i>contact us</i>	
Add Your Logo	+\$3	+\$3	+\$3	+\$3	<i>contact us</i>	

NUTRITION

PRODUCT PRICING SHEET 2024



EATWELL KIT



KIT INCLUDES:

- 1 Insulated Lunch Tote
- 2 Snack2Go Stack
- 3 EatWell Cards

Welcome Guide with Access to Online Resource Hub.

ITEM #EWK01	25	250	500	1000	1000+	(4E)
Blank (No Branding)	\$30	\$29.50	\$29	\$28.50	contact us	
Add Your Logo	+\$3	+\$3	+\$3	+\$3	contact us	

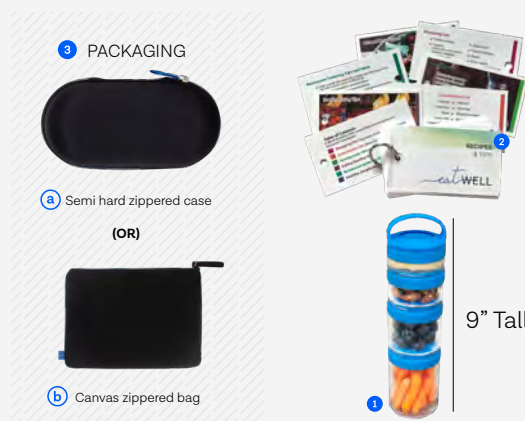
KIT INCLUDES:

- 1 Snack2Go Stack
- 2 EatWell Cards
- 3 Packaging
 - a Semi hard zippered case (or)
 - b Canvas Zippered Bag

Welcome Guide with Access to Online Resource Hub.

	25	250	500	1000	1000+	(4E)
Case (#SSKC01)	\$24	\$23.50	\$23	\$22.50	contact us	
Bag (#SSKB01)	\$21	\$20.50	\$20	\$19.50	contact us	
Add Your Logo	+\$3	+\$3	+\$3	+\$3	contact us	

SNACKSMART KIT



EATWELL CARDS



TIPS INCLUDED

- Shopping Lists
- Substitution Lists
- Healthy Recipes
- Dining Out Tips And More!
- Sunday Prep Ideas

ITEM #EWC01	25	250	500	1000	1000+	(4E)
Blank (No Branding)	\$8.50	\$8.25	\$8	\$7.50	contact us	
Add Your Logo	+\$3	+\$3	+\$3	+\$3	contact us	

STRESS MANAGEMENT

PRODUCT PRICING SHEET 2024



KIT INCLUDES:

- 1 Lavender Pillow Spray
- 2 Calming Bergamot Scented Hand Lotion
- 3 Eucalyptus Shower Steamer
- 4 Silk/Cotton Eye Mask
- 5 Noise Reducing Earplugs
- 6 Sleepwell Cards (tips for healthy sleep)
- 7 Packaging
 - a Semi hard zippered case (or)
 - b Canvas Zippered Bag

SLEEPWELL KIT



Welcome Guide with Access to Online Resource Hub.

	25	250	500	1000	1000+	(4E)
Case (#SWKC01)	\$28	\$27.50	\$27	\$26.50	contact us	
Bag (#SWKB01)	\$25	\$24.50	\$24	\$23.50	contact us	
Add Your Logo	+\$3	+\$3	+\$3	+\$3	contact us	

LIVEWELL KIT



KIT INCLUDES:

- 1 Flat Resistance Band
- 2 LiveMindfully Cards
- 3 EatWell Cards
- 4 BeActive Cards
- 5 Packaging
 - a Semi hard zippered case (or)
 - b Canvas Zippered Bag

Welcome Guide with Access to Online Resource Hub.



	25	250	500	1000	1000+	(4E)
Case (#LWKC01)	\$25	\$24.50	\$24	\$23.50	contact us	
Bag (#LWKB01)	\$22	\$21.50	\$21	\$20.50	contact us	
Add Your Logo	+\$3	+\$3	+\$3	+\$3	contact us	

STRETCHWELL KIT



KIT INCLUDES:

- 1 Flat Resistance Band
- 2 Stretch Cards
- 3 Organza Drawstring Bag

Available Colours



ITEM #STKL01	25	250	500	1000	1000+	(4E)
Blank (No Branding)	\$14.50	\$14	\$13.50	\$13	contact us	
Logo'd Hangtag	+\$1	+\$1	+\$1	+\$1	contact us	

KIT INCLUDES:

- 1 Non-Slip Socks and Fingerless Gloves
- 2 Yoga Cards
- 3 Organza Drawstring Bag

Available Colours



Welcome Guide with Access to Online Resource Hub.

ITEM #YKC01	25	250	500	1000	1000+	(4E)
Blank (No Branding)	\$15.50	\$15	\$14.50	\$14	contact us	
Logo'd Hangtag	+\$1	+\$1	+\$1	+\$1	contact us	





YOGAFIT KIT



LIVEMINDFULLY CARDS



TIPS INCLUDED

-  Calm the Mind
-  Find Work Life Balance
-  Sleep Soundly
-  Create Happiness And More!

ITEM #LMC01	25	250	500	1000	1000+	(4E)
Blank (No Branding)	\$8.50	\$8.25	\$8	\$7.50	<i>contact us</i>	
Add Your Logo	+\$3	+\$3	+\$3	+\$3	<i>contact us</i>	